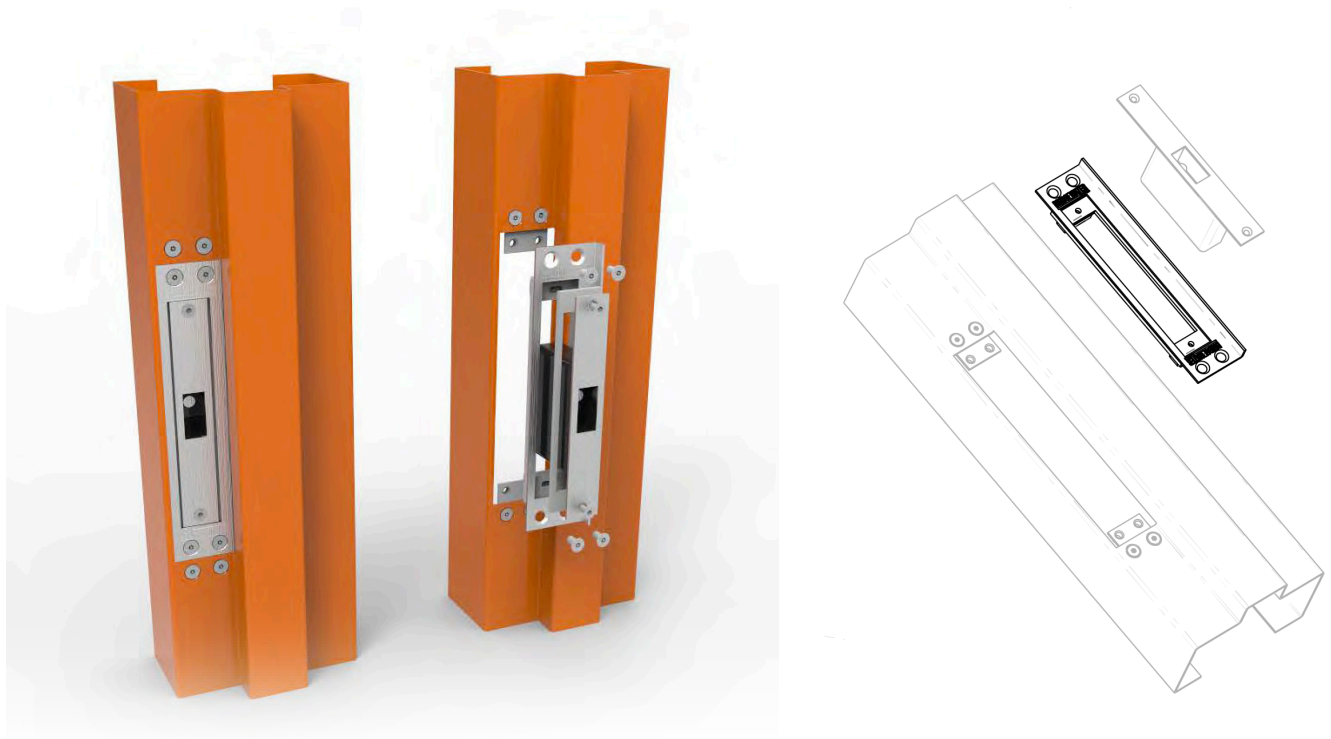


Multilock Microfix 15

MLMF - 15



OVERVIEW

The Multi-lock Microfix 15 (MLMF 15) enables a micro switch to be adjusted to suit dead bolt engagement.

As buildings move due to natural elements, this will cause doors to twist and bow and acoustic seals to place pressure on doors. These natural factors are continually working against the correct functionality of a door set.

The MLMF 15 allows adjustments to be made horizontally and diagonally to realign the door hardware prolonging the life of the doors.

DOOR SUITABILITY

- Use on single door high security door frames.
- The MLMF-15 is used in new and existing door applications.
- New door frames can be machine prepped within the factory prior to delivery on site.

FIRE RATING

Fire rated up to 240 minutes



ZONE 3 TO 5 APPLICABLE