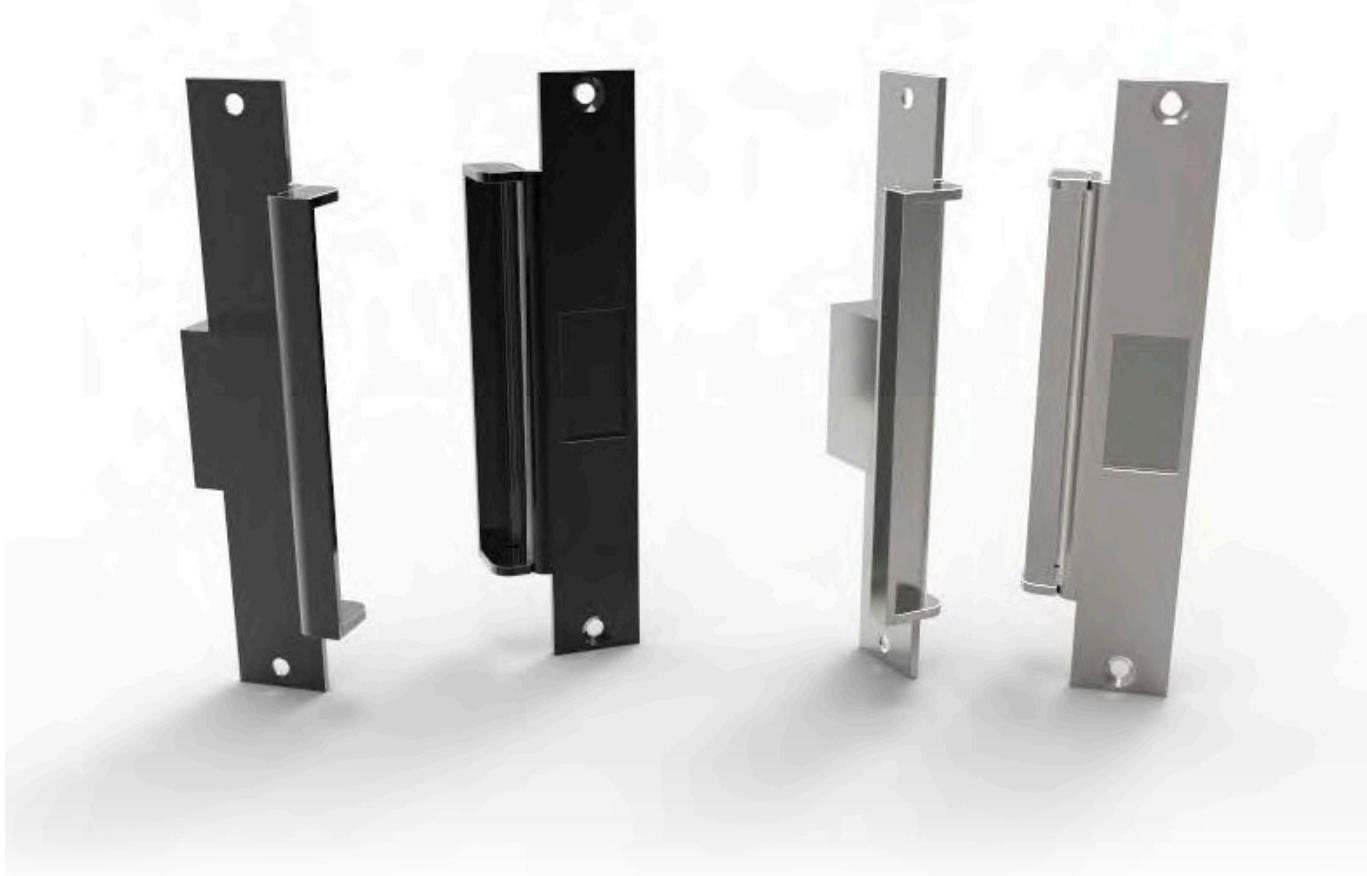


MSEI



OVERVIEW

The MSEI is designed to be installed into electric strike cut-outs.

Ideal for restoring functionality where access or security requirements are no longer required.

The MSEI is compatible with the MLMF10 allowing minor adjustments in both horizontally and diagonally.

DOOR SUITABILITY

Available:

- 316 Stainless steel
- 316 Stainless steel powder coated

Application:

- Timber frames
- Aluminium frames
- Steel frames

FIRE RATING



Fire rated up to 240 minutes