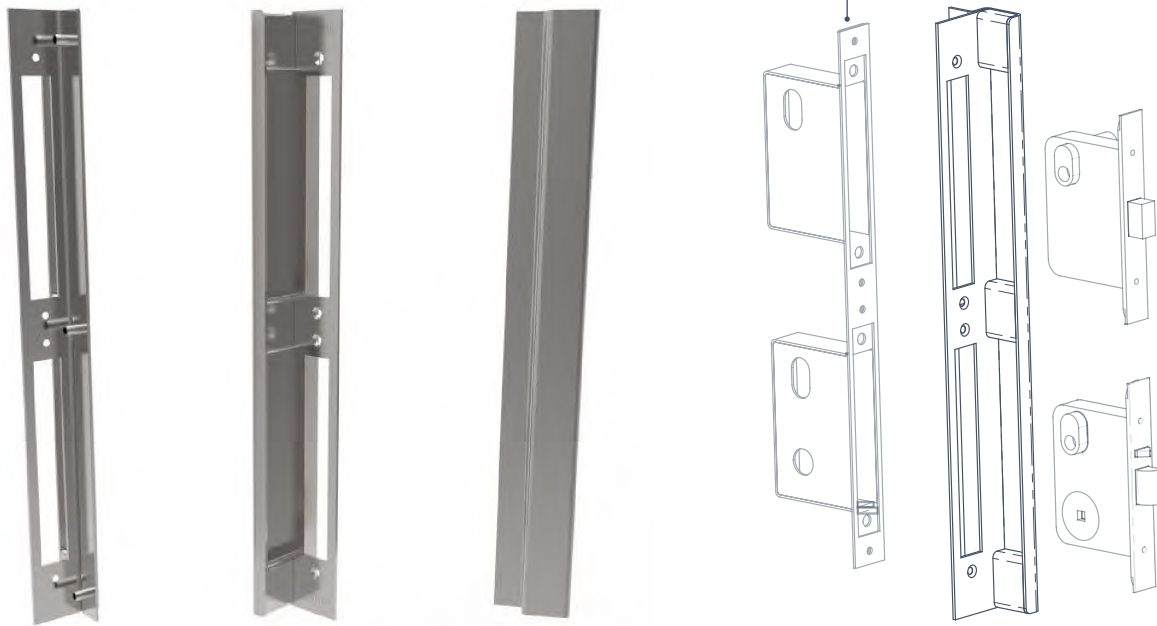


# Multilock Strike Shield 1000

**MSS-1000**



## OVERVIEW

The Multilock Strike Shield 1000 (**MSS-1000**) is designed to protect and secure double locks from being tampered. The **MSS-1000** can be interlocked with the **MLB-100** (sold separately) to provide additional protection to the lock body for physical security and natural weather conditions.

Designed and precision cut to ensure the centre spacing between locks to suit **DHLC** which can withdraw two lock bolts. The **MLB-100** lock box interlocks into the **MSS-1000** providing additional protection to the lock body for physical security and natural weather conditions.

The **MSS-1000** face plate is placed on the leading edge of the door with the door side mount plate placed to the door face. It can be surface mounted or recessed into the door. An additional door side packing plate is supplied for assistance with installation when lock centres are off set allowing extra adjustment if required. It is critical that the lock tongue back set is measured and marked prior to cut-outs. This allows for correct lock operation and latching.

## DOOR SUITABILITY

- **MSS 1000** is used for double lock configuration
- Suitable for minimum 45mm thick doors
- Manufactured from 316 stainless steel

## FIRE RATING



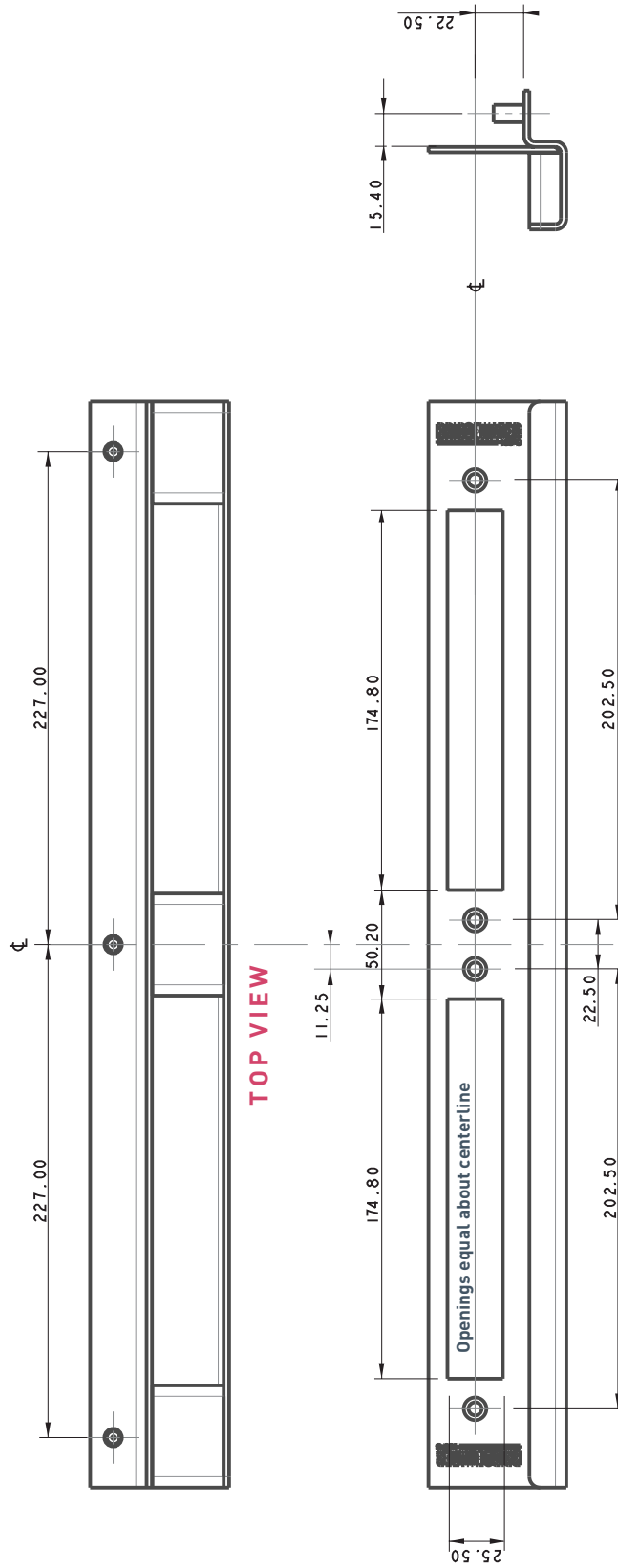
Fire rated up to 240 minutes

**ZONES 3 TO 5 APPLICABLE**

MSS-1000

# Multilock Strike Shield 1000

Pre drill holes using a 12mm drill bit - 3 holes



END VIEW

Pre drill holes using a 1/8th drill bit - 4 holes

FRONT VIEW