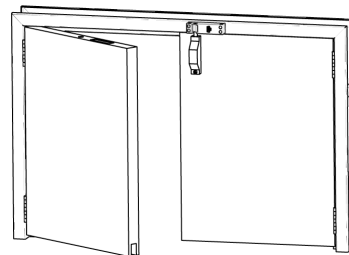
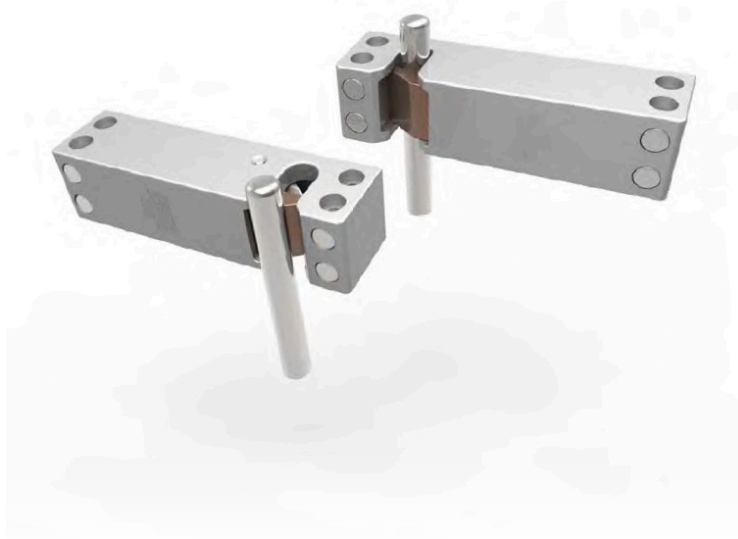
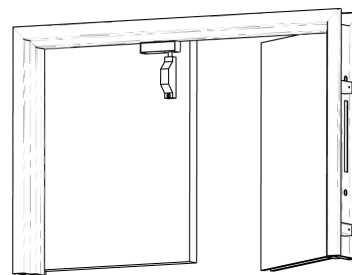


Self-latching Keeper

SA-ADI



Horizontal Mount



Vertical Mount

OVERVIEW

The SA-ADI is a fire door compliant self-latching keeper designed for bolt applications on secure area fire rated doorsets.

The keeper allows the a security bolt positioned at the top of a door to self-latch as the door is closed. With an anti-tamper device fitted, once the bolt is engaged the latching tongue becomes fixed. Key operation is required to disengage the bolt.

Manufactured from a 316 stainless steel outer casing and 316 stainless steel internal components.

DOOR SUITABILITY

- Used for both inward and outward opening door applications
- Universal for left or right handed door sets
- Anti-tamper proof mechanism

FIRE RATING

Fire rated up to 240 minutes



ZONES 3 TO 5 APPLICABLE